

## WEST STRATEGIC NEIGHBOURHOOD FORUM

**Day:** Thursday  
**Date:** 12 October 2023  
**Time:** 6.30 pm  
**Place:** Zoom

Item No.	AGENDA	Page No
1.	<b>APOLOGIES FOR ABSENCE</b> To receive any apologies for absence.	
2.	<b>MINUTES</b> To consider the minutes of the meeting of the West Strategic Neighbourhood Forum held on 22 June 2023.	1 - 4
3.	<b>VACCINATIONS</b> To receive a presentation from the Director of Population Health.	5 - 10
4.	<b>JOINT HEALTH &amp; WELLBEING STRATEGY AND LOCALITY PLAN</b> To receive a presentation from the Director of Population Health.	11 - 18
5.	<b>HIGHWAYS AND POTHOLE</b> To receive a presentation from the Head of Engineering Services.	19 - 38
6.	<b>ENFORCEMENT PANEL ACTIVITY</b> To receive a presentation from the Head of Public Protection.	39 - 48
7.	<b>DROYLSDEN PLAN CONSULTATION</b> To receive a presentation from the Director of Place.	49 - 54
8.	<b>DATE OF NEXT MEETING</b> To note that the next meeting of the West Strategic Neighbourhood Forum is scheduled to take place on 25 January 2024.	

This page is intentionally left blank

# Agenda Item 2

## WEST STRATEGIC NEIGHBOURHOOD FORUM

22 June 2023

Commenced: 6.30 pm

Terminated: 7:25 pm

**Present:** Councillors Quinn (Chair), Axford, Boyle, Cooney, A Holland, B Holland, Jones, Mills, Naylor, Newton, Reid, M Smith, T Smith, Ward

**In Attendance:**

Emma Varnam	Assistant Director, Operations and Neighbourhoods
Tony Decrop	Assistant Director of Children's Services
Jane Darrington	Head of Service, Adolescent Services
Mathew-Morris Jones	SHift Lead Guide
Deborah Smolka-O'brien	Service Unit Manager, Cared for Children

**Apologies for Absence:** Councillors Warrington, Martin, Ricci and Gwynne

### 1. MINUTES

#### RESOLVED

The minutes of the meeting of the West Strategic Neighbourhood Forum held on 24 March 2022 were approved as a correct record.

### 2. CADDY LINERS IMPLEMENTATION

The Chair welcomed Emma Varnam, Assistant Director of Operations and Neighbourhoods, who gave a presentation in respect of the Caddy Liners Implementation, a copy of which was circulated with the agenda.

Ms Varnam reported that currently, the Council supplied free on request compostable caddy liners to encourage residents to compost their food waste and add it to their brown bin. It was however reported that food recycling caddy liners would no longer be provided free of charge from 1 July 2023.

It was explained that the collection of food waste was now a well-established practice across households in Tameside. The provision of caddy liners was not necessary to enable residents to recycle their food waste and did not align with the Council's environmental aspirations of achieving net zero services, reducing consumption and procuring sustainably.

Members were informed that the preferred approach was to recycle food waste directly into the caddy and then into the brown bin, reducing unnecessary resources in the waste stream as well as the detrimental carbon footprint of producing liners. Discussion ensued with regards to the presentation and the Carbon Footprint of the Caddy Liners.

The Council stood to save approximately £170k per annum because of the changes and Members believed that if residents wished to purchase caddy liners, they could do so inexpensively elsewhere.

The Chair thanked Ms Varnam for the presentation.

#### RESOVLED

That the content of the presentation be noted.

### **3. HOUSEHOLD SUPPORT FUND**

Emma Varnam, Assistant Director, Operation and Neighbourhoods presented before Members providing an overview of the Household Support Fund in Tameside.

Ms Varnam explained that in Rounds 1 to 3, funding had primarily been used to support families with children eligible for free school meals during the holiday periods. Vouchers were provided, via the schools, to all eligible families ahead of each holiday period in the form of supermarket vouchers. Following the guidance set by the Department for Work & Pensions (DWP), it was reported that an application based scheme had also been available for low income households to support with basic costs such as food, energy, utilities and related essentials.

Members were advised that the Household Support Fund had been distributed by Tameside Council since October 2021, with funding provided in 4 'Rounds' to all Local Authorities. Ms Varnam provided an overview of each 'Round' and reported that funding for a 12 month period had been confirmed, which allowed for longer term planning and support.

It was explained that funding would be used to support the most vulnerable families in Tameside, as follows;

- 70% would be provided via schools to families eligible for free school meals.
- 27% allocated to an application based scheme for residents not directly in receipt of Cost of Living Payments, accessed via Navigators which ensured that residents were supported to access the funding most relevant to them and wider support to build longer term financial resilience.
- 3% allocated for staffing required to administer the fund.

Ms Varnam further advised that families with school age children would receive their voucher via schools directly. Older Families (aged 65+) who were in receipt of Council Tax Support would be contacted directly and organisations such as Age UK, the Action Together community network and the Carers team would further help to raise awareness of the support available. Outreach drop in sessions would also be planned in community venues and information would be provided via existing channels such as social media, Welfare Rights, Citizens Advice Bureau, Customer Services, Libraries and Helping Hands events. It was explained that funding would be rolled out in four tranches throughout the year to spread out the support, especially during the winter periods.

Members were provided with contact details for the Household Support Fund team and were advised that residents would be able to book appointments by phone, online or in person with Customer Service Navigators to discuss the support they would need and to help them access funding relevant to their situation.

The Chair thanked Ms Varnam for a very informative presentation.

#### **RESOLVED**

**That the presentation be noted.**

### **4. FOSTERING**

The Chair welcomed Deborah Smolka-o'brien, Service Unit Manager, Cared for Children who attended the Forum to provide an update on Tameside Council's Fostering Service.

Members were informed that Fostering was the support and care for a child when they could not live at home that provided a stable and caring environment. It assisted with contact with birth parents and other connected persons; getting a child to school; attendance at meetings – reviews and education; and to undertake training to develop fostering skills. Anyone could foster and all ethnic and religious backgrounds were welcome. The only requirement was a spare bedroom in

the home, that did not have to be owned, and people ideally lived locally in order to transport children to school.

The type of carers required for the different cohorts was outlined alongside how people could assist. Ongoing fostering support was provided via social workers and support workers with social workers assigned to the children; support was also available through the Foster Care Association and there was a foster carer support group, a Buddy scheme, a training programme, therapeutic services and allowances and fees.

Members were told that a fostering campaign, Fostering Unfiltered, had been created in conjunction with Greater Manchester Combined Authority to help the conurbation recruit more foster carers, which also included a website Fostering Unfiltered-Home(fostering-unfiltered.org). Fostering Fortnight 2023 had taken place with a variety of events including an Advan campaign, Park Run events and a new team of foster care ambassadors, who represented the team at local events to help recruit more foster carers in Tameside.

The Staying Put initiative and supported lodgings were explained and contact details provided. Members were asked to share marketing materials and social media posts to assist with the much needed recruitment of foster carers in the Borough.

A discussion ensued with regard to supported lodgings and the initiatives that were currently undertaken to help increase the number of foster carers in Tameside.

The Chair thanked Ms Smolka-o'brien for returning to the Forum to provide an update on the Fostering Service.

## **RESOLVED**

**That the update presentation be noted.**

## **5. SHIFT**

The Chair welcomed Matthew Morris-Jones, SHiFT Lead Guide, who attended the Forum to deliver a presentation on SHiFT where every Practice was focused on enabling creative and impactful change with children and young people to break destructive cycles of harmful behaviour.

An introduction to the Adolescent Safeguarding Framework was provided, which had been developed as part of the Greater Manchester Children and Young Peoples Plan. The Framework had been created and adopted by the 10 Greater Manchester authorities and set out principles and guidance for working with young people. The Framework was not prescriptive and was designed to provide a shared foundation for the development of local systems and practice. The Framework provided some detail and examples around six practice principles and three strategic enablers that underpinned good practice with young people at risk of extra-familial harm.

The strategic ambitions were outlined and two projects that had taken place nationally were highlighted. In terms of Tameside, Members were told that the Practice commenced in February 2023 and was based in Youth Justice Services. An extensive scoping exercise took place with 116 considerations that went through a triage process and Tameside SHiFT was currently working with 27 children and young people who were supported by four Guides. There was emerging evidence of relationships being built and trust established. It was emphasised that establishing relationships was the cornerstone of SHiFT work and would develop as one of the key foundations of the SHiFT programme in order for young people to be able to move to a place of safety and strength.

A progress update was provided of the cohort as follows:

- 14 children were currently engaged and enjoying regular face-to-face interaction with regular communication via text message. All the professional networks had been contacted and the Guides were beginning to become embedded within this network.

- 6 children were tentatively engaging at present. These children required a more measured and staggered approach, whereby the initial steps were communicating through text message, visiting the home and ensuring the Guides were conducting themselves in a different manner befitting of the SHiFT model.
- 2 children had recently swapped Guides for two children as one Guide was working with cousins who were experiencing family issues and had become estranged, which would have caused issues when working with both.
- 5 were currently not wishing to engage, but steps of engagement were underway. For example, Guides remained in contact with the professional network, were sending letters and offering support through messaging. Due to the co-location with Youth Justice Services, Guides were able to ensure they were up to date with any pending matters for some of the cohort and therefore could bide time in offering the support.

Members were provided with the contact details of the Tameside SHiFT team and Members acknowledged the importance of partnership work and sharing knowledge.

The Chair thanked Mr Morris-Jones for an enlightening presentation

**RESOLVED**

**That the content of the presentation be noted.**

**6. DATE OF NEXT MEETING**

**RESOLVED**

**That the next meeting of the West Strategic Neighbourhood Forum is scheduled to take place on 12 October 2023, be noted.**

**CHAIR**

# Flu & COVID Vaccination Update Autumn-Winter 2023/24

Page 5

October Neighbourhood Forum  
Population Health

Agenda Item 3

# Winter Vaccinations

- Vaccination is a safe and effective way to help protect people from getting seriously ill with a disease.
- Flu vaccination is offered every autumn/winter – it is slightly different each year to protect against the different types of flu virus that are likely to be circulating.
- COVID-19 vaccination is being offered as boosters for those who are at high risk of getting more unwell from COVID-19 and the 2023 autumn/winter booster coincides with the flu vaccination programme.
- Vaccination provides individual protection but also makes it harder for viruses to spread between people, including those who are more vulnerable and/or unable to get vaccinated.
- NHS England sets out the criteria for who gets vaccinated and how the programmes work, as a local system we then work together to deliver the vaccines according to this.
- As Population Health we chair the Health Protection Board and COVID and Flu Vaccination Sub-Group of this Board, which brings together partners from across the locality, provides assurance and responds to local data.



# Seasonal Flu Vaccination Uptake 2022/23

Page 7

PCN	Over 65s	Under 65 (at risk)	Pregnant	Carers	All aged 2yrs	All aged 3yrs	All aged 50- 64
Ashton	72.6%	42.2%	20.5%	40.3%	25.2%	34.5%	38.1%
Denton	79.4%	47.9%	24.1%	44.6%	31.3%	46.8%	46.6%
Hyde	73.1%	40.9%	25.7%	36.0%	35.3%	39.2%	44.3%
Stalybridge	81.4%	52.4%	33.4%	44.1%	38.4%	45.9%	52.0%
<b>TOTAL</b>	<b>76.1%</b>	<b>44.9%</b>	<b>25.3%</b>	<b>39.9%</b>	<b>32.1%</b>	<b>40.8%</b>	<b>44.8%</b>
<b>GM</b>	<b>77.6%</b>	<b>46.0%</b>	<b>33.3%</b>	<b>-</b>	<b>35.9%</b>	<b>40.1%</b>	<b>-</b>



# COVID-19 AW Booster Vaccination Uptake 2022/23

	Cohorts – Priority Number and Group									
	1	2.1	2.2	3	4	5	6	7	8	9
	Care Homes*	H&SC Workers	80+	75-79	70-74 & CEV†	65-69	16-64 at risk	60-64	55-59	50-54
Tameside	61.6%				55.2%			49.2%		
GM	60.8%				53.5%			48.9%		

Cohort 1: Care Homes*	
Tameside	87.6%
GM	86.2%

\*Residents and carers  
 †Clinically Extremely Vulnerable

# Plans for Autumn-Winter 2023/24

- The vaccines are available in all 4 neighbourhoods. PCNs are leading on COVID-19 vaccine delivery, flu can be obtained from practices and community pharmacies. Co-delivery of both vaccines is available for eligible groups.
- Invite text messages sent from GP surgery sent to all eligible individuals.
- Special sessions for 2-3 year olds including free soft play vouchers in some areas.
- Maternity offering flu in antenatal clinic and providing flyer on COVID-19 vaccine availability.
- Schools programme underway and TMBC staff programme also available.
- Winter illnesses leaflet sent to parents via schools and early years, with translated versions available in Urdu and Polish.
- Communication campaigns on social media and local publications, posters and banners up in key locations.

# Get vaccinated!

**Protect your little ones and the wider family: vaccinate your 2 or 3-year-olds against flu !**

Contact your GP and arrange their **FREE** flu nasal spray vaccine appointment.

Available **from September** to children aged either **2 or 3** on **31st August** this year.

**Tameside**  
Metropolitan Borough

[www.nhs.uk/flu vaccine](http://www.nhs.uk/flu vaccine)



Page 10

- If you're eligible for flu and/or COVID-19 vaccination please take up the offer to get vaccinated ASAP.
- Details on who is eligible and how to book here: [Winter Vaccinations in Tameside](#)
- Promote the benefits of vaccination to others – vaccination is the best protection against COVID-19 and flu this winter.

# Building Back Fairer, Stronger, Together.

Page 11

**Tameside Joint Health & Wellbeing  
Strategy and Locality Plan  
2023-2028**



Agenda Item 4

# TAMESIDE SHARED VISION

Give Tameside children the best start in life

Help people stay well across the life course and detect illness earlier

Enable all Tameside residents to grow old with dignity and independence

All age mental health and wellbeing

The people in Tameside all have the opportunity to have a healthier and happier life, no matter where they live or who they are. This should include people being able to get the help and support they need without facing barriers, to make Tameside a great place for everyone.

Tackling inequalities in all our work

Help people get into, and stay in good work

Strengthen our communities

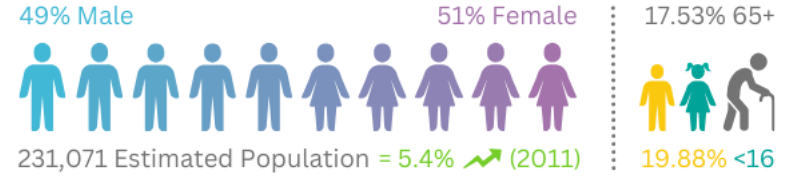
Deliver healthy places with accessible and inclusive services

## To do this we will

Building back Fairer    Building back Stronger    Building back Together



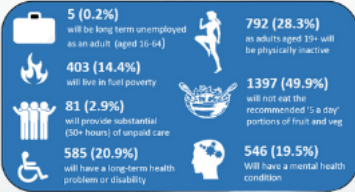
# Tameside in Context 2023



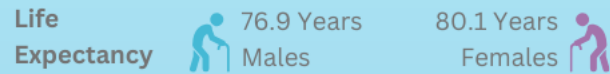
Help people stay well across the life course and detect illness earlier



Third highest rate of alcohol related cancers in country  
Early preventable deaths are almost 50% higher in Tameside compared to the national average.



Enable all Tameside residents to grow old with dignity and independence



13.1% aged 66 yrs or older lives alone  
 1,989 per 100,000 aged 66 yrs or over have been injured in a fall  
 83.3% of care homes in Tameside are rated as good or outstanding by CQC  
 Tameside population aged 65 yrs. plus has seen a 18.4% increase since 2011

Give Tameside Children the best start in life

- 39.2% of children in year 6 classified as overweight / obese
- 8.4% of children aged 5-17 in Tameside have a diagnosed mental health disorder
- Highest admission rate for under 19s for asthma in the country

Deliver Healthier places with accessible and inclusive services

43% of people live in areas in 20% most deprived nationally



Take-away Density - 143 take-aways per 100,000 population - highest in GM, 17th Nationally

Air Pollution - Tameside has the 2nd highest level of fine particulate matter in GM (indicator of poorer air quality)

Help people get into, and stay in good work



28.5% of jobs in Tameside paying below the living wage (2021) the highest rate in GM, equating to approx. 13,000 jobs

9% of the working population working in health and social care  
2% had sickness absence from work in last week

Strengthen our Communities



In every 1000 people in TAMESIDE:

- 20 have been supported by social prescribing in the last 12 months
- 180 people are living in poverty
- 140 are experiencing fuel poverty
- 90 people have been a victim of crime
- 19 are living in temporary accommodation
- 37 have been a victim of domestic abuse
- 49 have been a victim of violent crime



# The Voice of Tameside Residents

Page 14

...residents are  
concerned about  
poverty and climate  
change

...more job  
opportunities that  
match skills

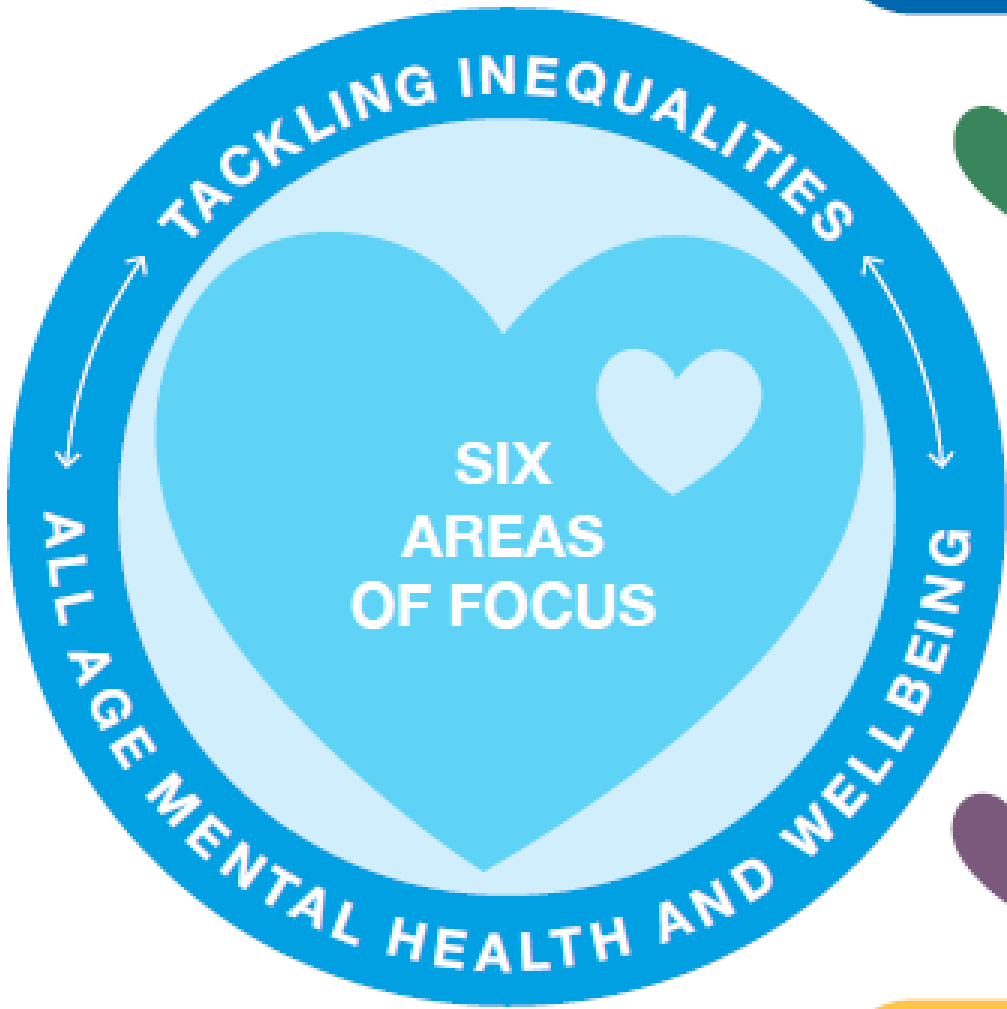
...satisfied with  
Tameside as a place to  
live



...charities  
should be  
supported



...recognise that local  
and national funding is  
a challenge

...want to see  
improved access  
to mental health  
support









 Give Tameside children the best start in life 

 Help people stay well across the life course and detect illness earlier 

 Enable all Tameside residents to grow old with dignity and independence 

 Help people get into, and stay in good work 

 Strengthen our communities 

 Deliver healthy places with accessible and inclusive services 

Building  
back  
Fairer

Building  
back  
Stronger

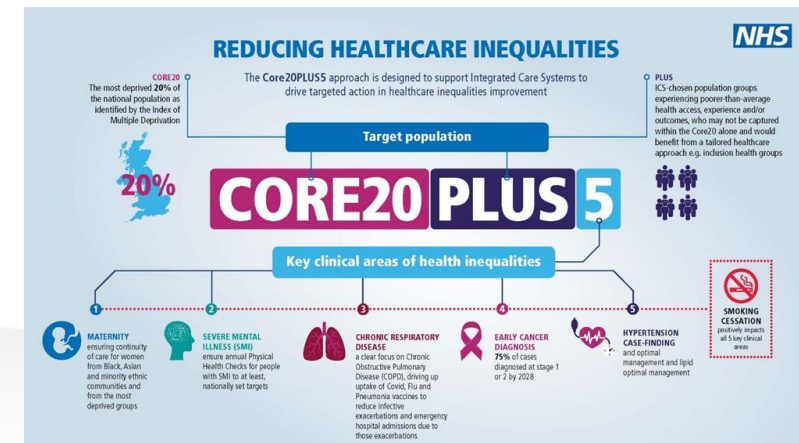
Building  
back  
Together

### Health Inequalities...

Page 16  
“avoidable,  
unfair and  
systematic  
differences in  
health between  
different groups  
of people”



- **FAIRER** - Tackling Inequalities (Inequalities Reference Group; *GM Fairer Health for All* framework; systematic approaches)
- **STRONGER** – Covid-19 recovery; prioritising prevention; enablers; needs assessments
- **TOGETHER** – Working with the whole system (inc. VCFSE); working with communities; links to Greater Manchester ICP



# ANY QUESTIONS?

## Please read the strategy

[Building-Back-Fairer-Stronger-Together-Tameside-Joint-Health-and-Wellbeing-Strategy-and-Locality-Plan-23-28.pdf](#)

This page is intentionally left blank

---

# Neighbourhood Forums

## Highways Maintenance

---

Page 19

Lee Holland

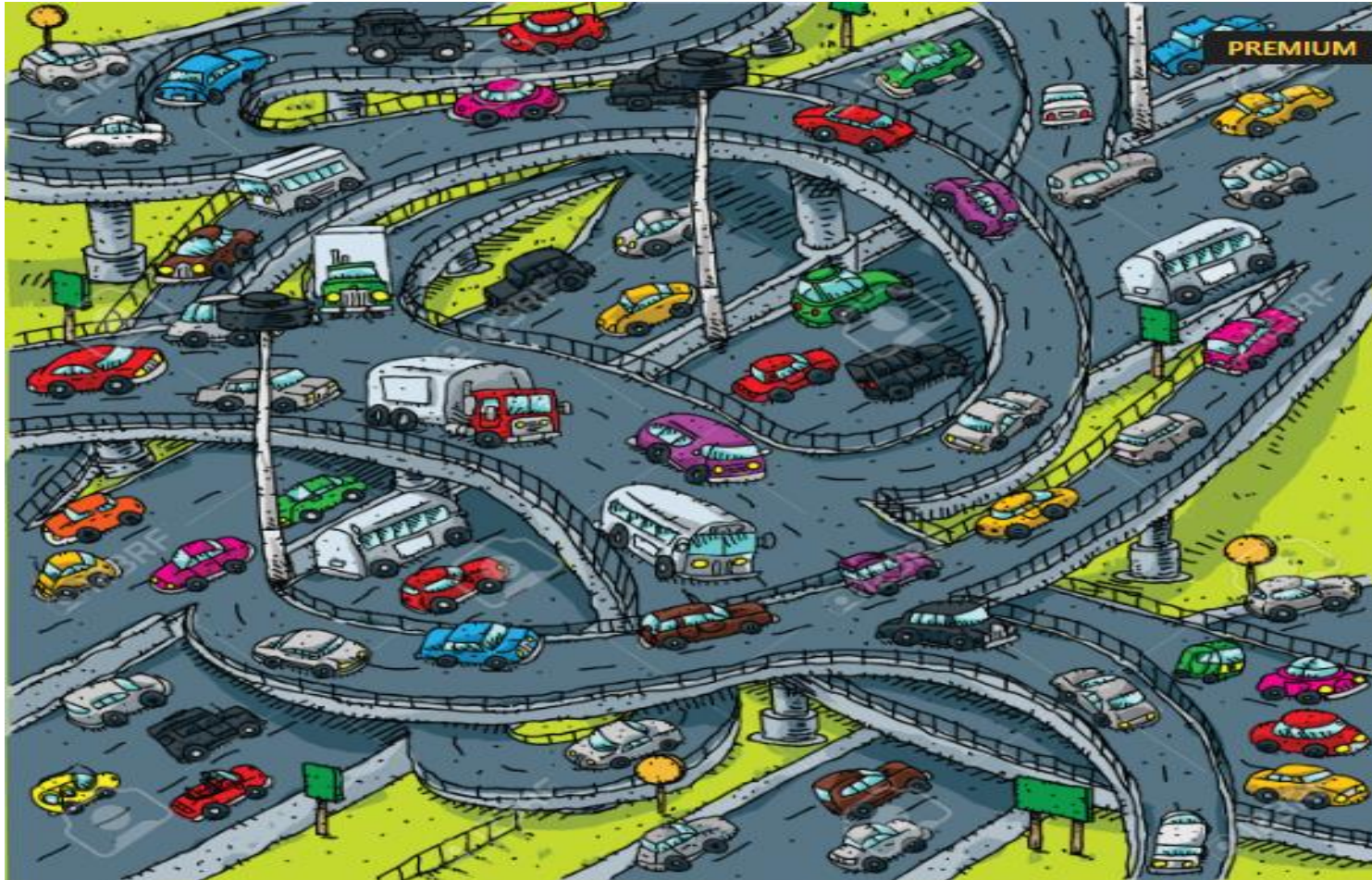
Head of Engineering Services

October 2023

Agenda Item 5

# What do we mean by “Highways”

Page 20



# Tameside's Highway Network

---

40 sq. miles / 95,000 properties / 231,000 residents

73km Principal Roads

70km Classified Roads

615Km Unclassified Roads

1,155Km Footways

48,126 Gullies

25,341 Street Lighting columns

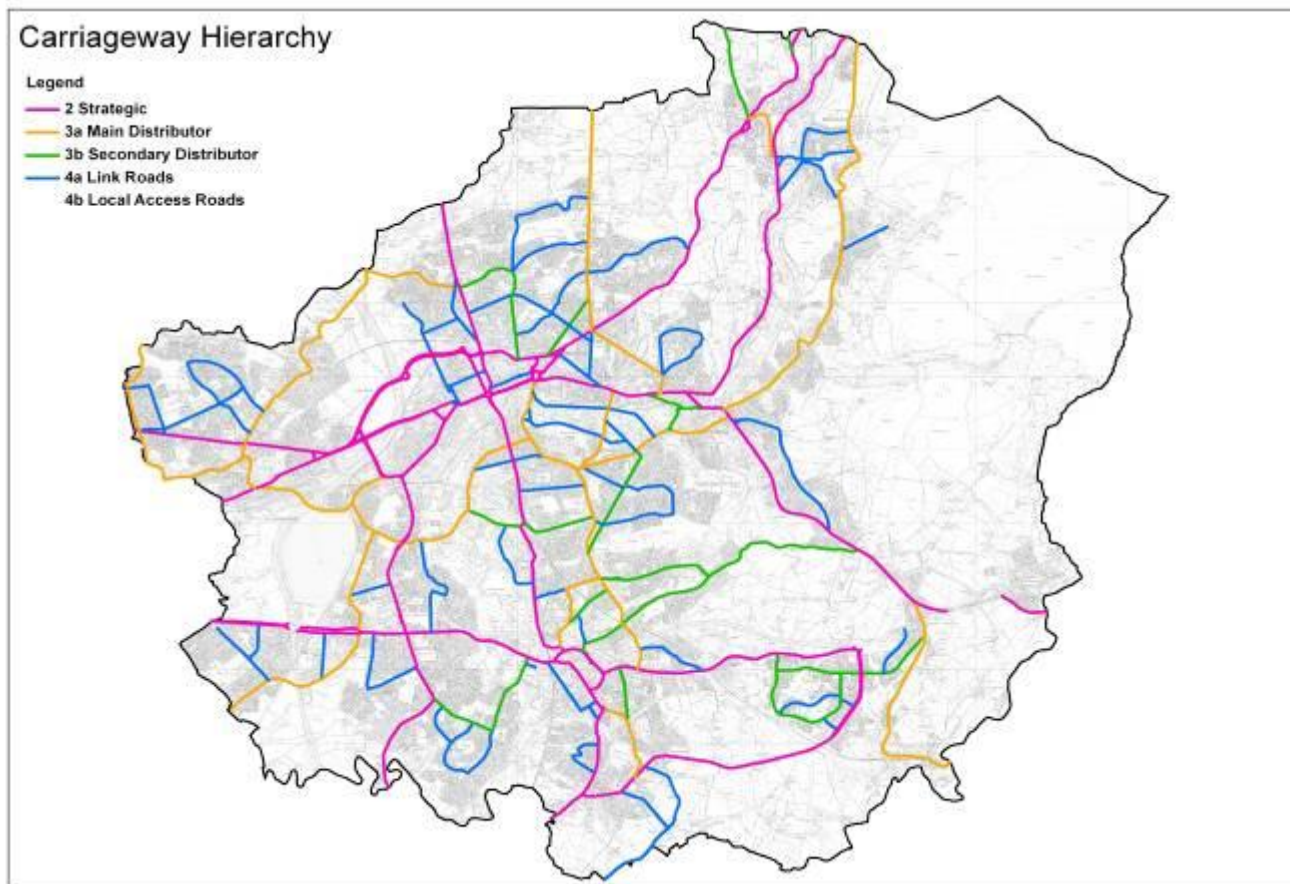
4,000 Signs (illuminated and non-illuminated)

159 Bridges

304 Retaining Walls / Structures

# Tameside's Highway Hierarchy

Page 22



Establish maintenance strategies relative to demand / risk



# Asset Valuation for Whole of Government Accounts (WGA)

Page 23

<u>2022 Return</u>	Gross Replacement		Depreciated Replacement
Asset Type	Cost (£m)	Depreciation (£-m)	Cost (£m)
Carriageways	1,034	78.3	955.7
Footways	254.4	69.8	184.6
Bridges / Structures	363.8	109.3	254.5
Street Lighting	47.1	28.5	18.6
Street Furniture	26.9	18.3	8.6
<b>TOTAL</b>	<b>1,726.2</b>	<b>304.2</b>	<b>1,422.0</b>

## Highway Asset Groups

---

- Highways (footways, roads and drainage)
- Structures (bridges and retaining walls)
- Street lighting (lighting columns or illuminated signs)
- Winter maintenance (gritting)

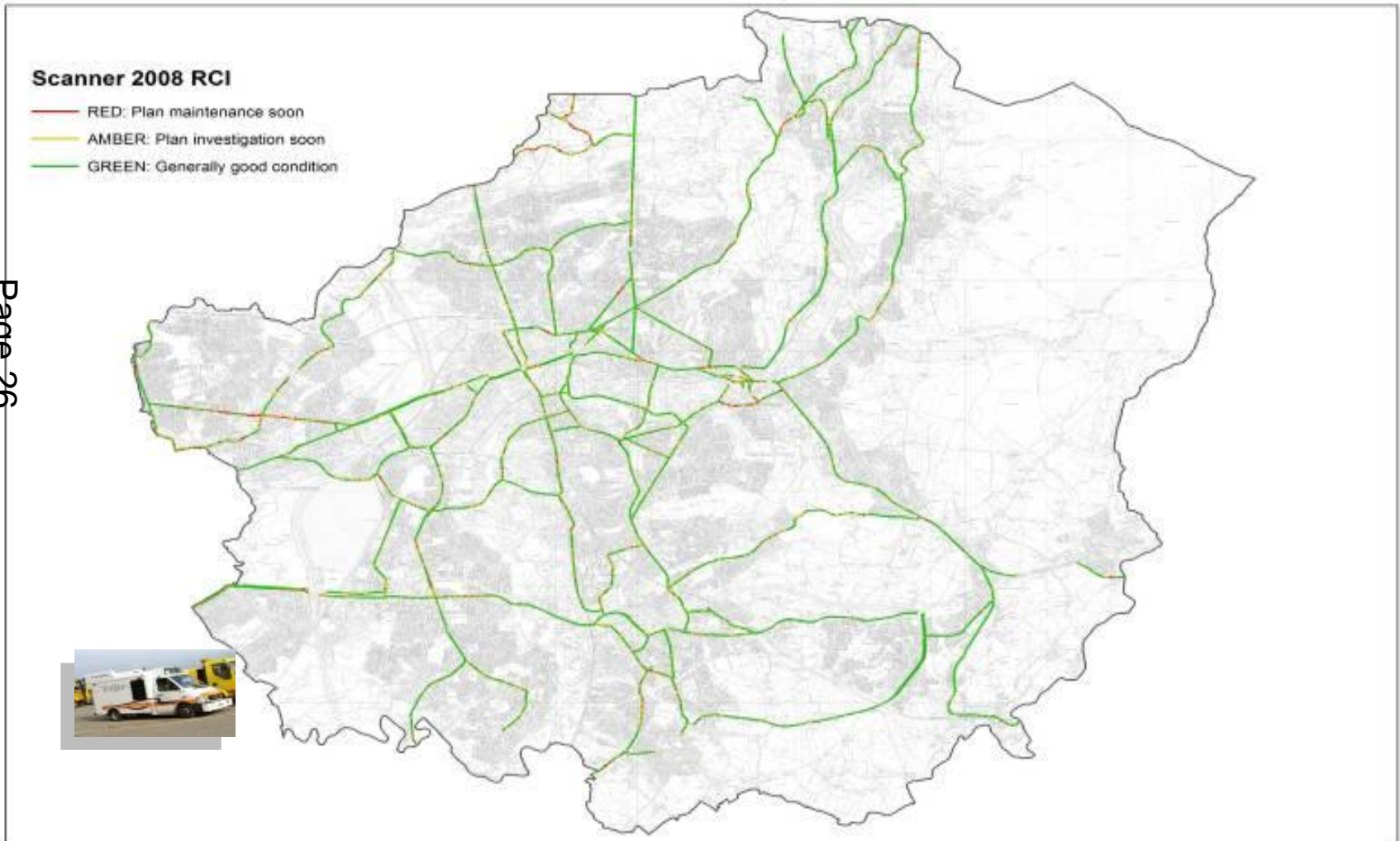
# Highway Assets Annual Maintenance Investment

<b>Highway Annual Maintenance Investment</b>		
	DfT Toolkit for steady state (£m)	DfT & TMBC allocations (£m)
Highways	£6.18	£3.12
Structures	£2.26	£0.58
Street Lighting	£2.00	£0.61
<b>Total:</b>	<b>£10.44</b>	<b>£4.31</b>

Page 25

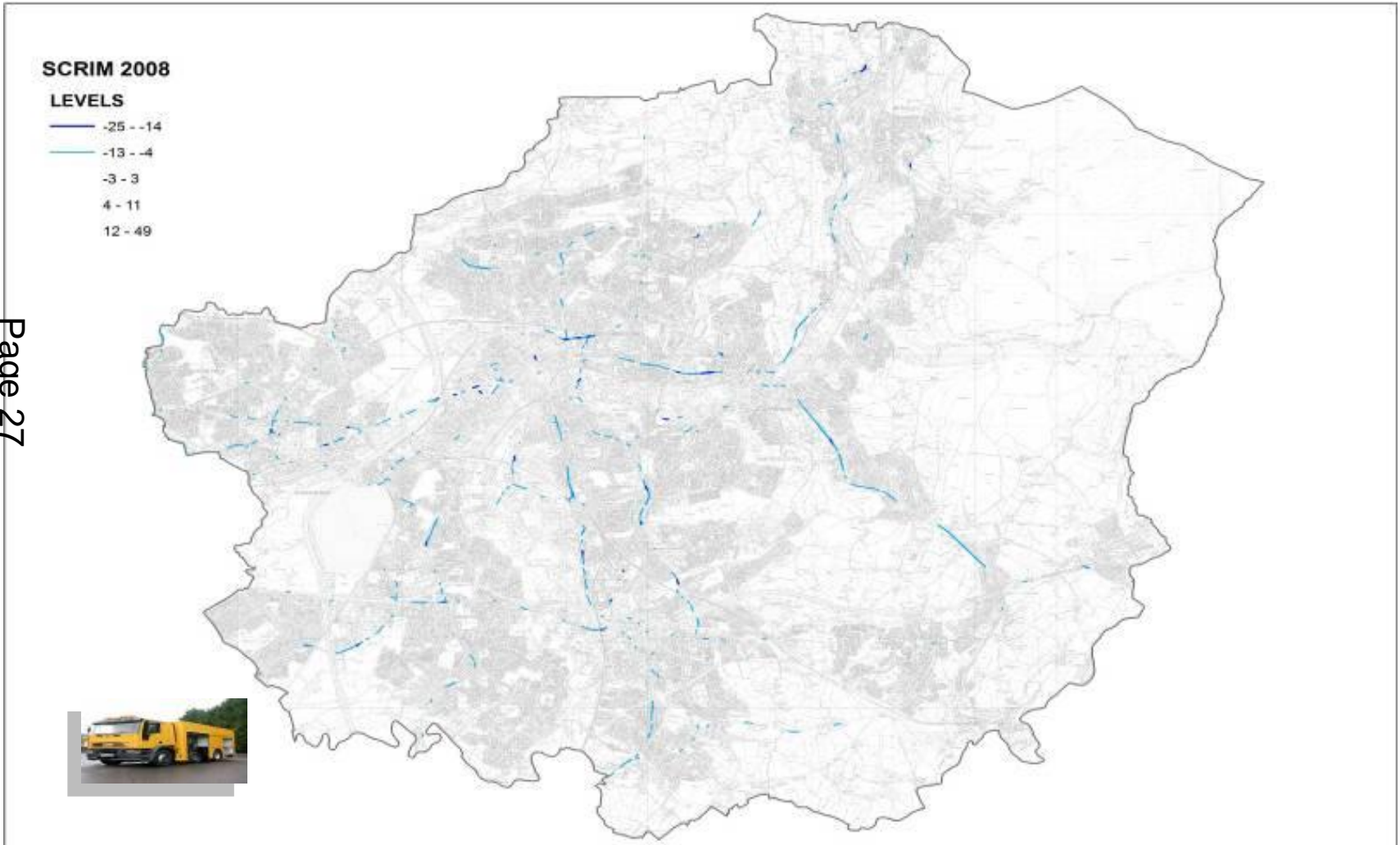
# Programme Building Classified Roads – SCANNER

Page 26

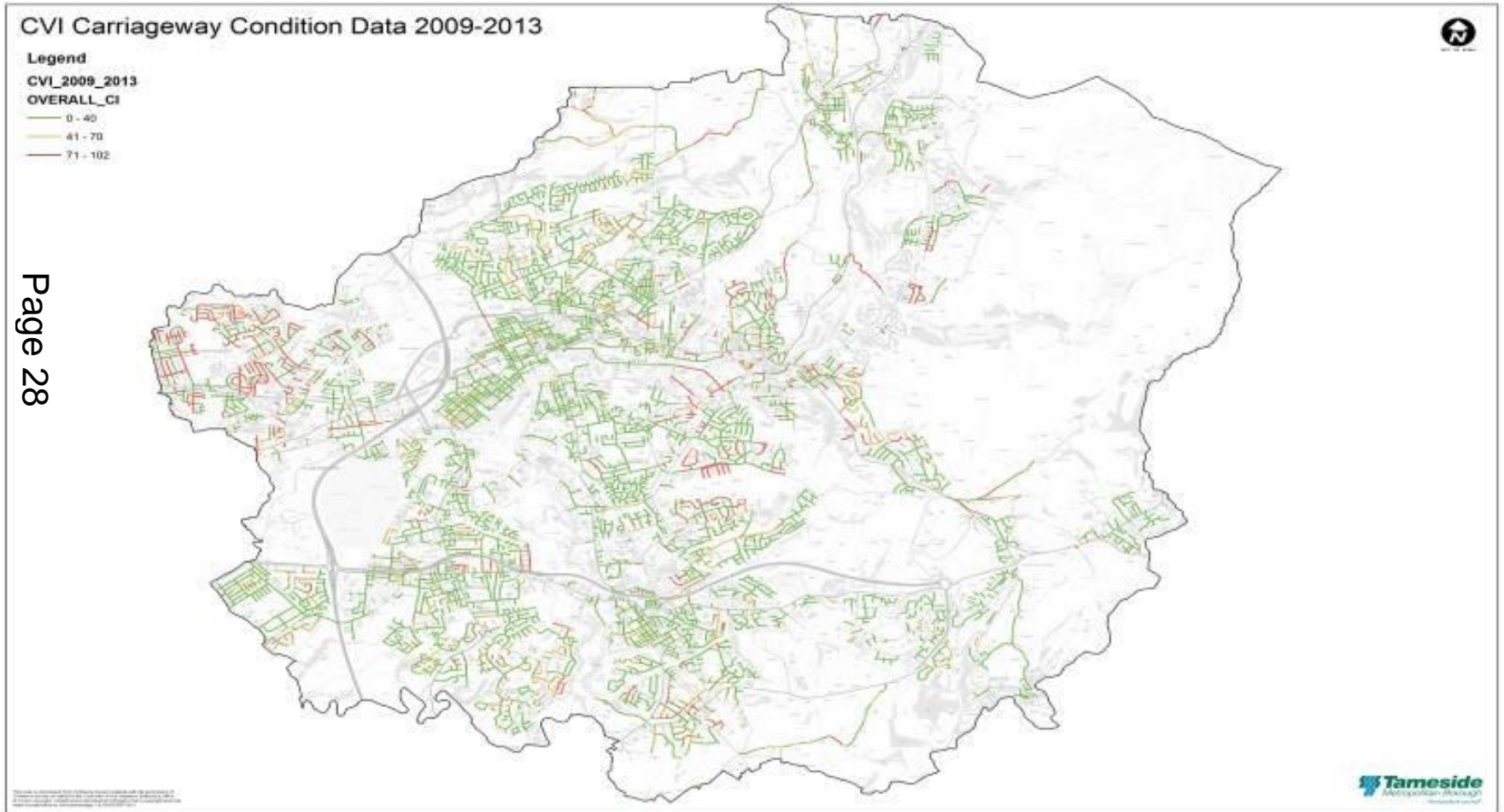


# Programme Building Classified Roads – SCRIM

Page 27



# Programme Building Unclassified Roads - CVI



# Condition Rating – ‘Traffic Light’

Page 29

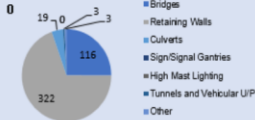
<u>Condition Rating</u>			<u>Description</u>
9	Very Poor	RED	Very poor condition, regular repairs needed, should be consider for major works as soon as possible
8	Poor	RED	Difficult to keep serviceable, major works may be the only way to achieve improvements
7	Deteriorating	RED	Repairs needing to be ordered more each inspection to maintain in reasonable condition, but not needing major works at this time
6	Below Average	AMBER	Deteriorating, numerous openings and requiring a small number repairs each inspection
5	Average	AMBER	Reasonable condition, what would be consider to be normal condition; neither good or bad
4	Fair	AMBER	Starting to exhibit a small amount of wear and tear but in reasonable condition
3	Good	GREEN	No work needed to be considered for some time, few repairs needed at each inspection
2	Very Good	GREEN	May be a few years old but no deterioration, very few repairs needed at each inspection
1	Excellent	GREEN	Looks recently renewed

# Highway Structures



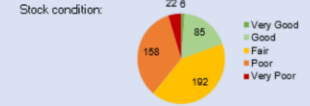
## Valuation Dashboard

Organisation: **Local Authority**  
 Authority type: **Local Authority**  
 Date data input: **00/01/2020**  
 No. of Structures: **463**  
 No. of Elements: **2444**



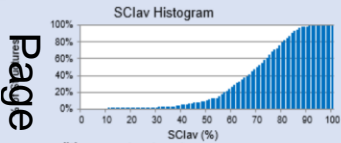
Stock Gross Replacement Cost: **£ 269,253,006**  
 Stock Depreciated Replacement Cost: **£ 164,002,203**

Indexation used for valuation: **2020/21**  
 Valuation Date: **27/10/2021**  
 Annual Depreciation: **£ 2,264,106**



## Stock Summary

### Average condition across the stock



Condition Band	No. of assets
Very Good	6
Good	85
Fair	192
Poor	158
Very Poor	22
<b>Total</b>	<b>463</b>

### Average condition per structure type



### Structure Stock Condition Indices (SSCI)

Asset Type	SSCI Average	SSCI Critical	SSS
Bridges	76.9	72.5	93.7%
Retaining Walls	62.0	51.6	51.4%
Culverts	70.8	58.3	83.4%
Sign/Signal Gantries	0.0	0.0	0.0%
High Mast Lighting	0.0	0.0	0.0%
Tunnels and Vehicular Underpasses	56.1	40.6	2.1%
Other	53.0	56.7	23.1%
<b>Stock</b>	<b>65.9</b>	<b>56.6</b>	<b>57.6%</b>

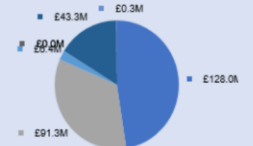
### Valuation results per structure type

Structure Type	No. Structures	GRC	DFC	Depreciation	DFC as % of GRC
Bridges	116	£ 128,040,772	£ 94,881,895	£ 33,158,877	74.1%
Retaining Walls	322	£ 91,289,062	£ 30,271,517	£ 1,017,546	33.2%
Culverts	19	£ 6,383,320	£ 3,643,223	£ 2,740,096	57.1%
Sign/Signal Gantries	0	-	-	-	0.0%
High Mast Lighting	0	-	-	-	0.0%
Tunnels and Vehicular UP	3	£ 43,269,391	£ 35,129,446	£ 8,139,945	81.2%
Other	3	£ 270,460	£ 76,121	£ 194,339	28.1%
<b>Full stock</b>	<b>463</b>	<b>£ 269,253,006</b>	<b>£ 164,002,203</b>	<b>#####</b>	<b>60.9%</b>

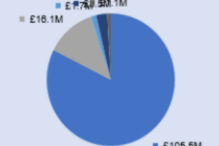
### Valuation results per structure group

Asset Type	No. Structures	GRC	DFC	Depreciation	DFC as % of GRC
Bridge: Vehicular (single span)	52	£ 105,514,356	£ 82,481,128	£ 23,033,228	78.2%
Bridge: Vehicular (2 or 3 spans)	17	£ 16,146,296	£ 9,253,279	£ 6,893,016	57.3%
Bridge: Vehicular (4 or more spans)	2	£ 1,709,286	£ 1,031,633	£ 677,653	60.4%
Bridge: Pedestrian/Cycle (single span)	40	£ 3,521,179	£ 1,562,267	£ 1,958,912	44.4%
Bridge: Pedestrian/Cycle (multi-span)	5	£ 1,149,656	£ 553,588	£ 596,068	48.2%
Cantilever Road Sign	0	-	-	-	-
Chamber/Cellar/Vault	0	-	-	-	-
Culvert (single cell)	16	£ 6,072,919	£ 3,425,972	£ 2,646,947	56.4%
Culvert (multi-cell)	3	£ 310,401	£ 217,252	£ 93,149	70.0%
High Mast Lighting	0	-	-	-	-
Retaining Wall (height > 3m)	42	£ 28,258,874	£ 11,091,963	£ 17,166,912	39.3%
Retaining Wall (height ≤ 3m)	280	£ 63,030,188	£ 19,179,554	£ 43,850,634	30.4%
Sign/Signal Gantry (cantilever)	0	-	-	-	-
Sign/Signal Gantry (spanning)	0	-	-	-	-
Structural Earthworks (height > 3m)	0	-	-	-	-
Structural Earthworks (height ≤ 3m)	0	-	-	-	-
Underpass: Vehicular	0	-	-	-	-
Underpass (or Subway): Pedestrian	3	£ 270,460	£ 76,121	£ 194,339	28.1%
Subway: Pipe	0	-	-	-	-
Tunnel (bored)	0	-	-	-	-
Tunnel (cut and cover)	3	£ 43,269,391	£ 35,129,446	£ 8,139,945	81.2%
<b>Total</b>	<b>463</b>	<b>£ 269,253,006</b>	<b>£ 164,002,203</b>	<b>#####</b>	<b>60.9%</b>

### Valuation by Structure Type



### Valuation by Structure Type





# Highway Structures

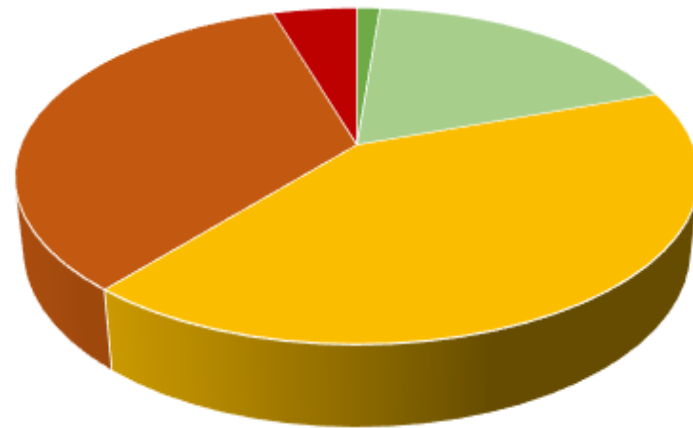
2021

## Highways Structures Condition

	No.	%ge
Very Good	6	1.30
Good	85	18.36
Fair	192	41.47
Poor	158	34.13
Very Poor	22	4.75
Total	463	

Page 31

Highways Structures Condition



■ Very Good ■ Good ■ Fair ■ Poor ■ Very Poor

# Street Lighting

TAMESIDE MBC LIFE CYCLE INVESTMENT SUMMARY				
STREET LIGHTING				
2022	ACTION			
	TARGET	TESTING	TESTING	REPLACE
CONDITION AND AGE PROFILE				
	GOOD THREAT RISK 0 0-15 years	FAIR THREAT RISK 1 16-25 years	POOR THREAT RISK 2 26-30 years	BAD THREAT RISK 3 31+ years
<b>ASSETS</b>				
≤ 6M COLUMNS	£248,300	£931,350	£158,865	£4,857,600
8M COLUMNS	£30,810	£46,095	£26,880	£3,408,500
10M COLUMNS	£52,325	£56,280	£40,320	£3,332,600
12M COLUMN	£0	£10,500	£25,095	£220,000
HERITAGE COLUMNS	£6,175	£27,300	£13,650	£455,000
ILLUMINATED SIGNS	£4,160	£31,500	£42,000	£2,040,000
<b>COLUMNS &amp; SIGNS INVESTMENT</b>	<b>£341,770</b>	<b>£1,103,025</b>	<b>£306,810</b>	<b>£14,313,700</b>
<b>BOLLARDS</b>				
	0-5 YEARS	6-10 YEARS	11-15 YEARS	16+ YEARS
BOLLARDS	£5,005	£10,000	£5,000	£420,000
<b>BOLLARD INVESTMENT</b>	<b>£5,005</b>	<b>£10,000</b>	<b>£5,000</b>	<b>£420,000</b>
<b>INVESTMENT VALUE ALL ASSETS</b>	<b>£346,775</b>	<b>£1,113,025</b>	<b>£311,810</b>	<b>£14,318,700</b>

NOTES					
<b>FAIR</b>	is the point at which NDT (Non destructive column testing begins)				
<b>POOR</b>	is the point at which the column has exceeded its design life. Individual sheets assume that we keep testing until they hit threat risk 3. Additional funding required if columns in threat band 1 and 2 fail. Also applies to signs and bollards.				
Other lighting such as lighting on wooden poles has been included within the appropriate asset size					
No allowance has been taken for underground assets/feeder pillars etc at this stage.					
Columns heights in below have been added to the next highest column band					
No specific data has been gathered from site and limited age profiles exist within symbology.					
Information has been taken from 2007 submission without					
site surveys being undertaken the information cannot be verified and should be treated as such					
The price of the luminaire can be removed once the LED invest to save programme is complete.					
It is assumed columns replaced are one for one					
All columns based on typical design life of 25 years					
Threat Risk	All assets at Risk Level	Treatment			
<b>GOOD</b>	0	5,335	These supports are considered to have the least risk		
<b>FAIR</b>	1	10,605	These supports have manageable risk and should be considered for structural testing		
<b>POOR</b>	2	2,972	These supports have manageable risk but should be programmed for replacement as they have exceeded their design life by the manufacturer		
<b>BAD</b>	3	10,437	These supports potentially provides the greatest risk to the public and an Operating Authority. These assets should be targeted for replacement first		

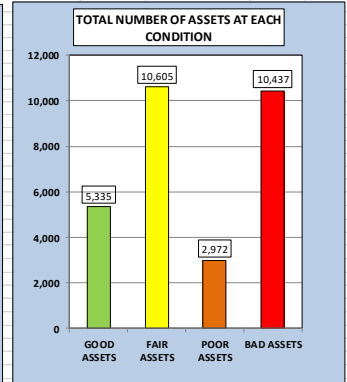
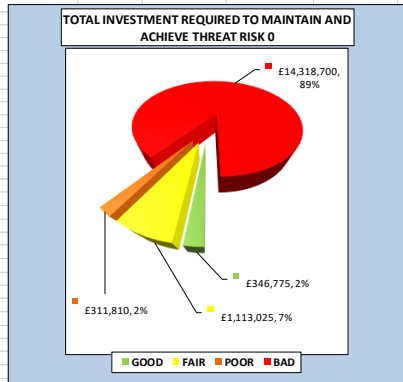
LIGHTING COLUMNS BASED ON TECHNICAL REPORT 22 (TR22)							
<b>GOOD</b>	→	Acceptable	→	Continue to monitor TR22			
<b>FAIR</b>	→	Medium to low priority	→	Continue to monitor TR22 and start structurally testing			
<b>POOR</b>	→	Medium to high priority	→	Continue to monitor TR22, Structurally test and replace if sufficient funds allow			
<b>BAD</b>	→	High priority	→	These assets should be targeted for replacement first			
Total investment per column size	Total columns and signs	THREAT RISK 0 0-15 years	THREAT RISK 1 16-25 years	THREAT RISK 2 26-30 years	THREAT RISK 3 31+ years	Columns requiring action	Average investment needed per unit
£6,196,115	18,251	3,820	8,870	1,513	4,048	18,251	£339
£3,512,285	3,174	474	439	256	2,005	3,174	£1,107
£3,481,525	3,479	805	536	384	1,754	3,479	£1,001
£255,595	439	0	100	239	100	439	£582
£502,125	615	95	260	130	130	615	£816
£2,117,660	2,464	64	300	400	1,700	2,464	£859
<b>TOTALS</b>	<b>28,422</b>	<b>5,258</b>	<b>10,505</b>	<b>2,922</b>	<b>9,737</b>	<b>28,422</b>	<b>£4,705</b>

BOLLARD CONDITION CATEGORY						
Total investment required on bollards	Total bollards	Good condition 0-5 YEARS	Fair condition 6-10 YEARS	Poor condition 11-15 YEARS	Bad condition 16+ YEARS	Average investment needed per unit
£440,005	927	77	100	50	700	£475

<b>GOOD</b>	£346,775	<b>GOOD ASSETS</b>	5,335
<b>FAIR</b>	£1,113,025	<b>FAIR ASSETS</b>	10,605
<b>POOR</b>	£311,810	<b>POOR ASSETS</b>	2,972
<b>BAD</b>	£14,318,700	<b>BAD ASSETS</b>	10,437
	£16,090,310		29,349



## Street Lighting

---

- Age profile of our columns is dictating our strategy for maintenance.
- We undertake structural testing on a percentage of our columns.
- We undertake visual inspections.
- We undertake electrical testing.

# Winter Maintenance

Page 34



# Risk Management

Page 35



## Risk Management

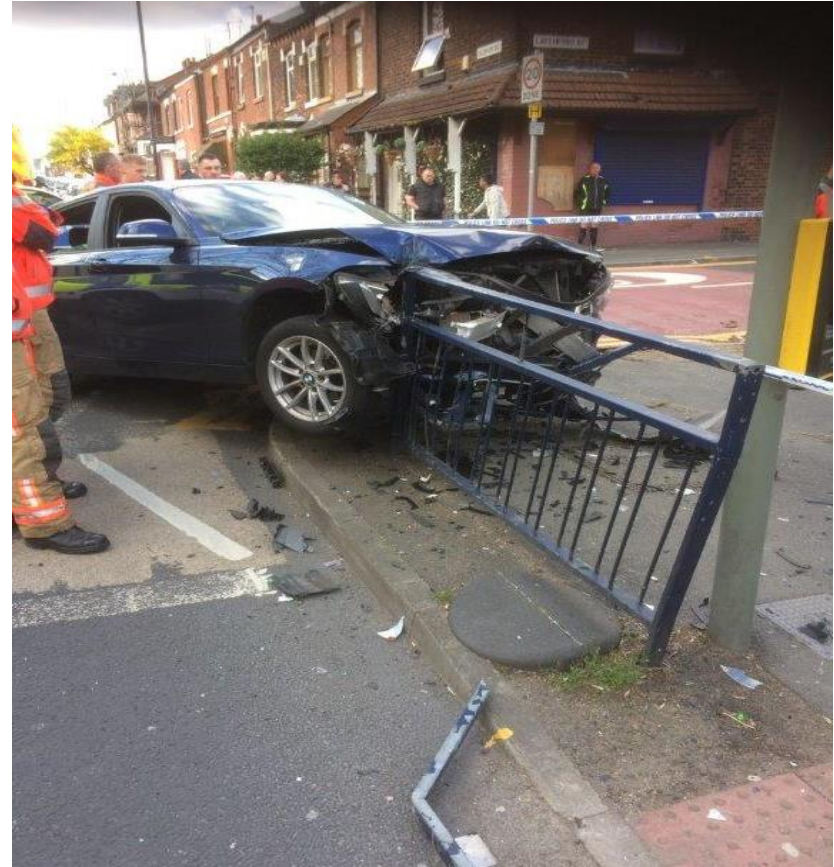
---

Page 36

- We undertake regular inspections of the network based on our policy.
- The frequency is determined on a risk based approach.
- Interventions are based on our criteria.
- Inspections undertaken last year
  - 7,516 footway
  - 7,118 carriageway

# On-Call Engineer

Page 37



# Highways Maintenance

---

Page 38



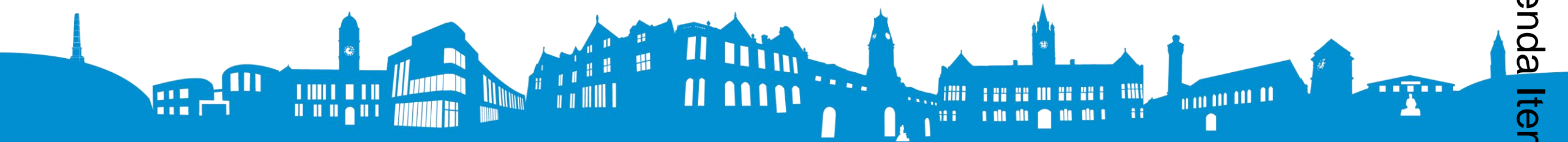
823828740



# NEIGHBOURHOOD FORUM

## Enforcement Activity Update

Sharon Smith, Head of Public Protection



# Public Protection

Functions undertaken by the Public Protection team include:

- Food Safety and Food Standards
- Trading Standards
- Animal Health and Welfare
- Housing Enforcement
- Environmental/Waste Enforcement
- Health and Safety
- Public Health
- Environmental Protection
- Licensing
- Parking Services



# Corporate Enforcement Policy

- The Council has a requirement to have a Corporate Enforcement Policy.
- A draft of the Policy is currently being updated.
- The Policy outlines how TMBC enforces a range of legislation in a fair, equitable, and consistent manner.
- The policy is intended to protect the public, the environment, consumers, and workers within the borough to meet their legal obligations, and taking firm action against those who flout the law or act irresponsibly.
- The policy applies to all services with enforcement duties, although some services have specific legislative guidance and regulations that set out the enforcement requirements in these services and therefore will have specific service area policies in addition to the corporate one.



# Enforcement Panel

- The Panel meets quarterly
- The purpose of the Panel is to:
  - Provide overview, assurance and scrutiny of the wide range of enforcement activity undertaken across the Council by receiving reports from service areas in scope.
  - Promote the enforcement activities of the Council enforcement services throughout the Borough.
  - Provide cohesion of the Council's enforcement bodies.
  - Promote integrated provision and joined up planning across a range of enforcement activities with wider service providers, such as Greater Manchester Police.
  - Deliver on the strategic priorities, including increasing enforcement across the Borough.



# Enforcement Activity March – Sept 2023

## Food Safety / Standards

- Inspections 528
- Hygiene Improvement Notices 5
- Voluntary Closures 3

## Trading Standards

- Prosecutions 7 ongoing
- Seizures 9,820 illicit cigarettes  
1.15kg of hand rolling tobacco  
487 non-compliant vapes

## Waste Enforcement

- Fly Tipping Prosecutions 2
- Fixed Penalty Notices 79
- Service Requests 1,747

## Parking

- On Street & Off Street PCN's 9,376
- Bus Lane PCN's 1,371

## Environmental Protection

- Air/Dust/Smoke/Noise/Odour Service Requests 722
- Abatement Notices Served for Statutory Nuisance 18

## Housing Standards

- Housing Standards Service Requests 152
- Homes for Ukraine Inspections 11
- HMO Inspections 67

## Licensing – Taxi

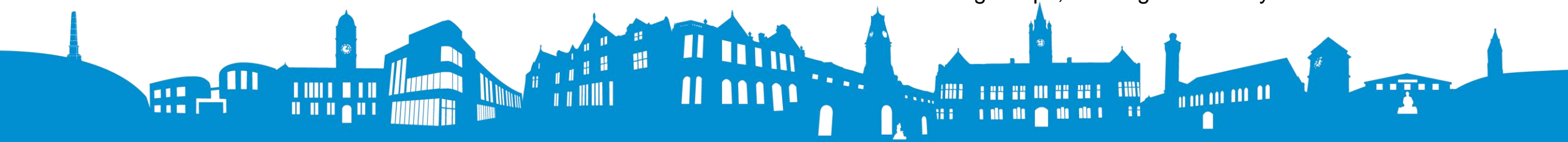
- Driver, Vehicle, Operator Licences 906

## Licensing – Licensing Act 2003

- Premises, Club, Personal Licences 394

## Licensing – Gambling Act 2005

- Betting Shops, Gaming and Lottery Permits 31



# Enforcement Highlights

## Environmental Health Prosecution – Bake n Butty Café

- Business owner illegally installed a petrol generator in the basement
- Sentence: 18 weeks custodial sentence, 100 hours of unpaid work, 20 rehabilitation days, £130 victim surcharge and £5,000 costs

## Trading Standards Operation Wagtail, 26 April 2023

- Seized: 472 packs of cigarettes, 19 packets of Hand Rolling Tobacco and 64 Vapes



## Underage Sales Test Purchase Operation

- Targeting sales of e-cigarettes to minors
  - 25 businesses visited, 3 business sold to underage test purchasers
  - 157 e-cigarettes seized
  - Enforcement action against these businesses is underway

# Enforcement Highlights

## Waste Enforcement Days of Action

- Hyde Werneth, 15 March – 7 FPN's
- St Peter's, 28 June – 11 FPN's
- St Michael's, 12 July – 7 FPN's,
- Waterloo 27 Sept – 7 FPN's



## Waste Prosecutions

- Mr Davenport dumped waste outside Ash Road Household Waste Recycling Centre Magistrates imposed: fine of £500, victim surcharge of £50 and costs of £1,269.
- Ms Chadwick dumped household waste on Bentinck Street, Ashton-under-Lyne Magistrates imposed: fine of £112 and costs of £200.

## Licensing Panel Hearings

- 2 applications were refused by Speaker's Panel (Licensing) as drivers did not meet the standards of our fit and proper test



# Anti-Social Behaviour Team: Jan – Aug 23

## Reports

- Total number of reports 178

## Enforcement

- Public Space Protection Order tickets issued 21
- Community Protection Warnings 4
- Community Protection Notices 3

Page 46





# Contact Details

**Environmental Health and Trading Standards**

[publicprotection-es@tameside.gov.uk](mailto:publicprotection-es@tameside.gov.uk)

**Anti-Social Behaviour**

[asb@tameside.gov.uk](mailto:asb@tameside.gov.uk)

**Licensing**

[licensing@tameside.gov.uk](mailto:licensing@tameside.gov.uk)



This page is intentionally left blank

# Droylsden Town Centre Masterplan

**Damien Cutting  
Economic Growth Lead**

**Neighbourhood Forum West**

Page 49

Agenda Item 7



# Introduction

- Town centres across the country have declined:
  - Increase in vacant units
  - Reduction in footfall
  - Lack of investment
  - Poor quality environment
  - Anti-social behaviour
  - Limited nighttime offer
- Growth in online shopping, out of town shopping centres, COVID-19 and Cost of Living
- Need to rejuvenate and reinvent town centres

Page 50



# Droylsden Masterplan

- Strategically well positioned – Metrolink, M60, City Centre, Co-Op Live Arena
- Opportunity for change
- Council secured £100,000 GMCA Evergreen funding
- Appoint consultant team to prepare masterplan for town centre
- Start masterplanning process beginning of November
- Complete masterplan Spring 2024



# Droylsden Masterplan

First stages will include:

- Understanding local priorities and ambitions
- Issues
- Opportunities
- Evidence gathering
- Consultation and engagement – surveys, website, drop in events
- Dates to be confirmed



Page 52



# Droylsden Masterplan

- Approved masterplan
- Identify opportunities for development
- Strategies for movement and connectivity
- Bring vacant units back into use
- Public realm strategy
- Links to green space assets and Droylsden Marina



No funding for delivery identified!

**Thank you**

**Any questions?**

Page 54

